



P.O. Box 7799
Bend, Oregon 97708
email: info@jms-llc.com
office: 541.598.5044
mobile: 541.213.8526
www.Jms-llc.com

INTRODUCING JMS2-LLC

JMS2 services are based on VERY COMPETITIVE WHOLESALE PRICES for turn-key Labor & Materials packages, quality workmanship & fast-track production geared to meet construction schedules on any type or size of project.

JMS2 specializes in Apartments, Assisted-Livings, Senior Living Facilities, Hotels, Multi-family projects, Condominiums, Townhomes, Commercial Buildings & Tract or Custom Housing, we have done it all. Our company has 40+ years of solid experience & expertise in the Pacific Northwest, southwest & all western states on a wide range of projects. JMS2 employs qualified, experienced, legally documented installers, and has the manpower, wholesale material sources, tools & equipment necessary to excel in today's commercial construction industry.

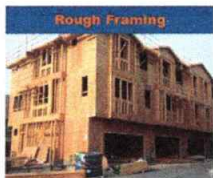
Most importantly, we understand the wholesale pricing, organization & performance needed to meet budgets, expectations & needs of GC's, developers & owners. Our references will attest to this fact! JMS2 would appreciate the opportunity to submit competitive & timely proposals for: Rough Wood Framing; Hardie Siding; EIFS; Drywall & Metal Framing; Concrete Foundations & Slabs; Window Installs. Package discounts are offered for the award of two or more trades.

JMS2 believes our selection to your team will prove to be a valuable asset to your projects. Our longstanding commitment is to assist clients to construct successful projects. Give us a call, we'll do our best to impress at all times! JMS2 is mobile, willing to travel & our material prices are mill direct wholesale priced & drop shipped to the project.

JMS2-LLC is licensed, bonded & insured in Oregon, Idaho, Montana, Wyoming, Utah, Colorado, Washington & Texas. Our company is a Woman Owned Business Enterprise.

Thank You !!

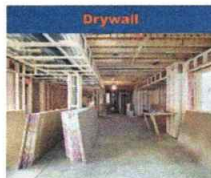
JMS2-LLC



Rough Framing



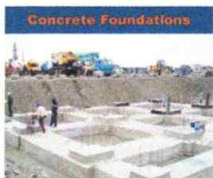
Siding



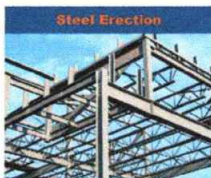
Drywall



Metal Framing



Concrete Foundations



Steel Erection



Concrete Slabs



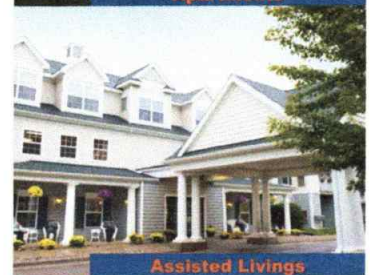
Gypsum Concrete



Hotels



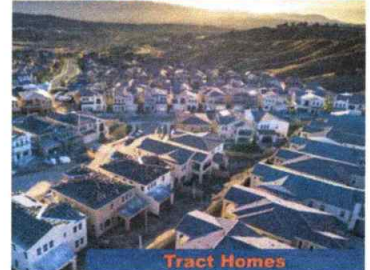
Apartments



Assisted Livings



Commercial Buildings



Tract Homes

See our portfolio at www.JMS-LLC.com